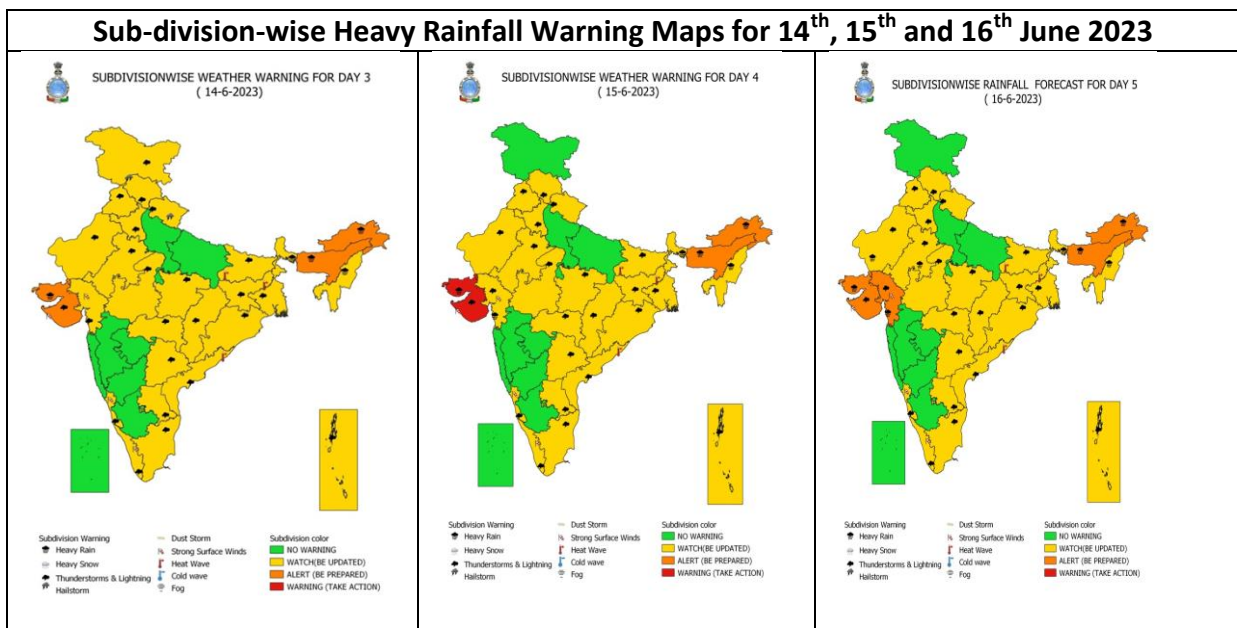


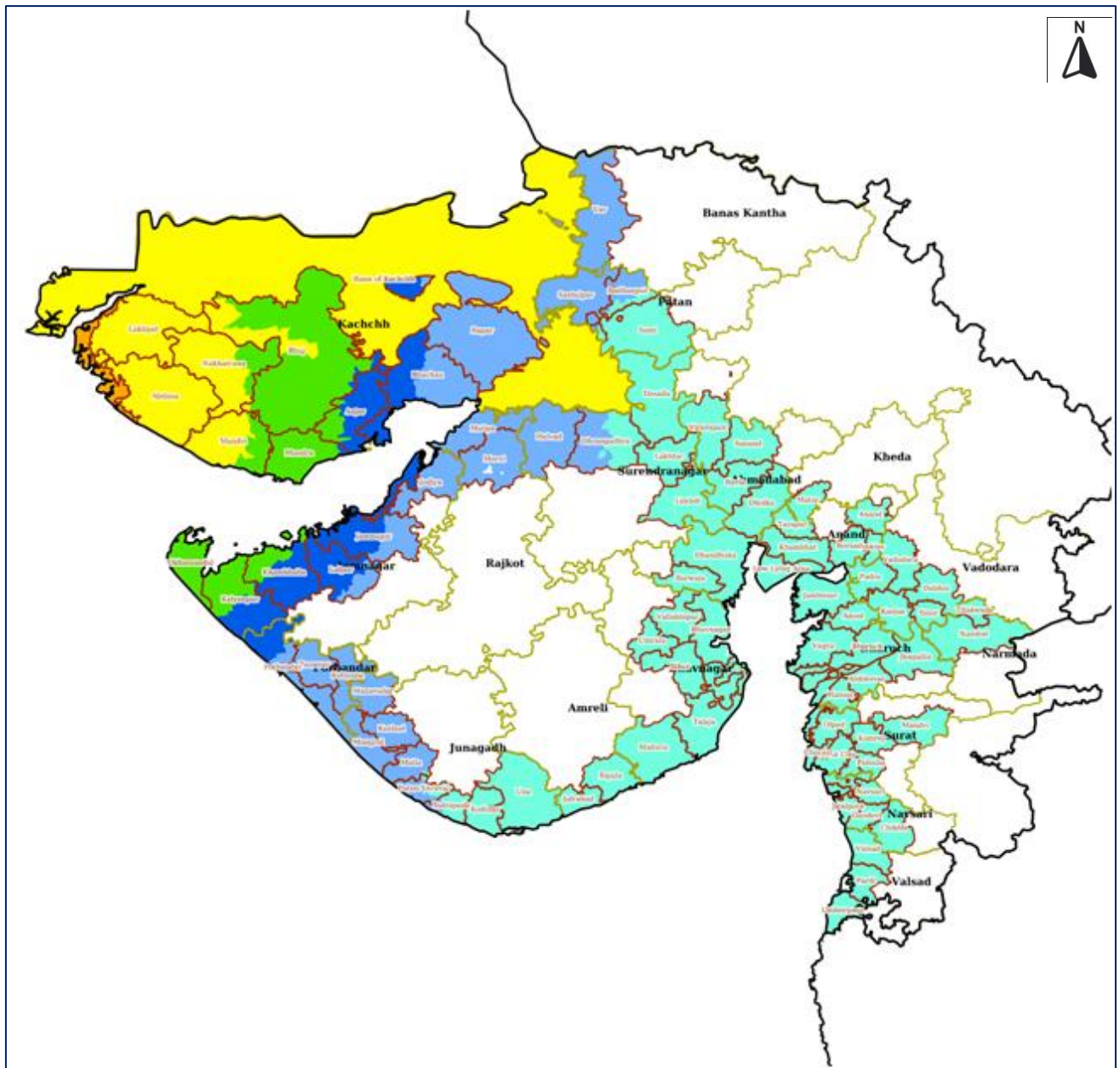
Rainfall Warning Based on 1800 UTC of 12th June 2023

Heavy Rainfall warning for Gujarat (Kutch, Devbhumi Dwarka, Porbandar, Jamnagar, Rajkot, Junagarh and Morbi districts):

- Light to moderate rainfall at many places in coastal districts of Saurashtra & Kutch with isolated heavy rainfall on 13th June.
- Light to moderate rainfall at most places with heavy to very heavy rainfall at isolated places very likely over Kutch, Devbhumi Dwarka, Porbandar, Jamnagar, Rajkot, Junagarh and Morbi districts of Saurashtra & Kutch on 14th June.
- The intensity of rainfall would increase with heavy to very heavy rainfall at a few places and extremely heavy falls at isolated places very likely over Kutch, Devbhumi Dwarka & Jamnagar and heavy to very heavy rainfall at a few places over Porbandar, Rajkot, Morbi & Junagarh districts of Gujarat on 15th June.
- Isolated heavy rainfall is very likely over remaining districts of Saurashtra and north Gujarat region on 15th June.
- Light to moderate rainfall at most places with heavy to very heavy rainfall at isolated places very likely over north Gujarat and adjoining south Rajasthan on 16th June.

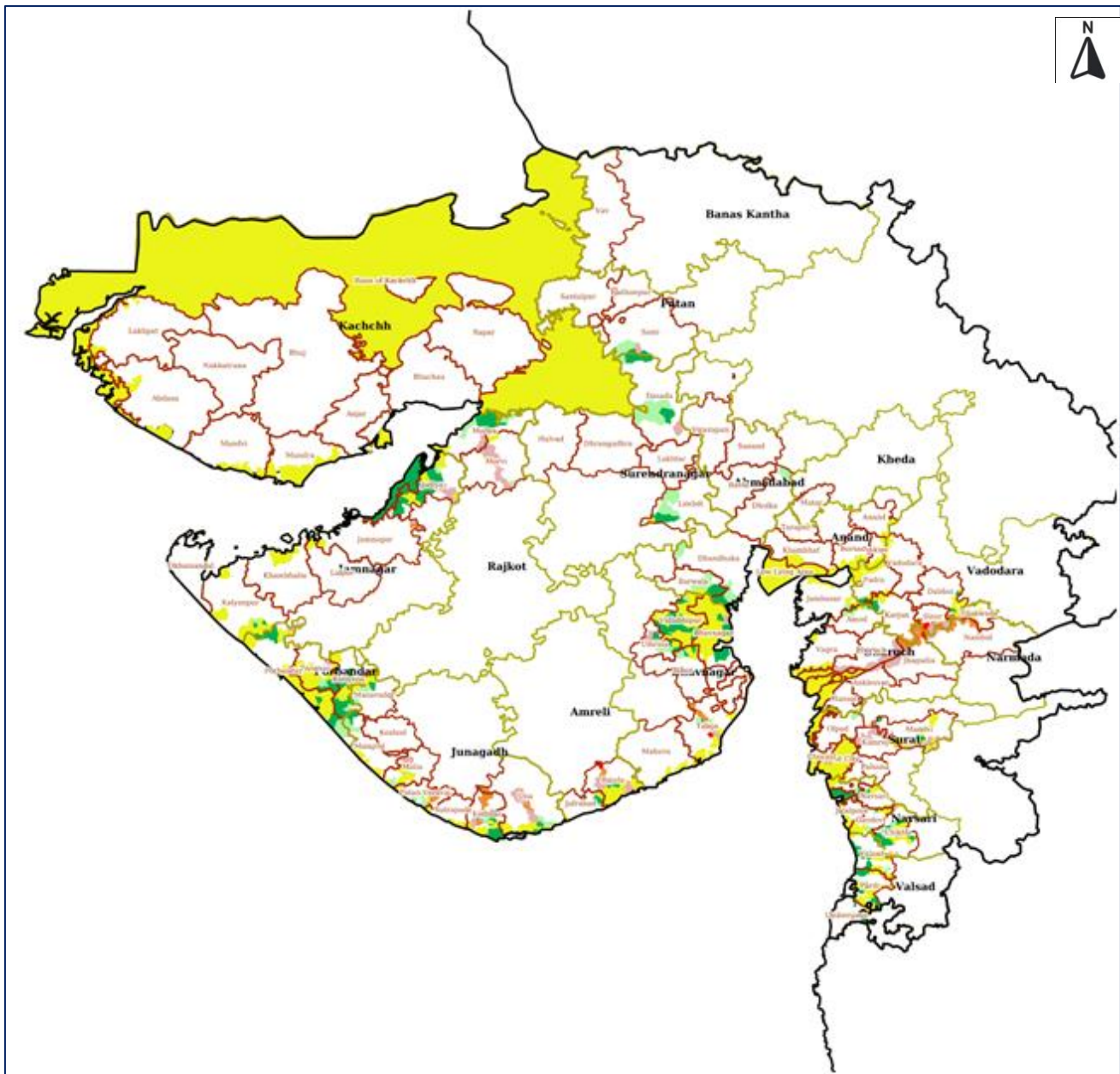


Hazard Map - Wind Speeds for Cyclone Biparjoy Wind



L E G E N D	State Boundary	District Boundary	Tehsil Boundary	Village Boundary	
	Wind Speed (Less than 31 Km/h)	Wind Speed (31 - 49 Km/h)	Wind Speed (49 - 61 Km/h)		
	Wind Speed (61 - 88 Km/h)	Wind Speed (88 - 117 Km/h)	Wind Speed (117- 166 Km/h)		
	Wind Speed (166 - 221 Km/h)	Wind Speed (Greater than 221 Km/h)			

Hazard Map – Flood Depth for Cyclone Biparjoy Flood



L E G E N D	State Boundary	District Boundary	Tehsil Boundary	Village Boundary
	Very Low (Less than 0.25 m)	Low (0.25 to 0.50 m)	Moderate (0.50 to 1.0 m)	
	High (1.0 to 2.0 m)	Very High (2.0 to 3.0 m)	Extreme (Greater than 3.0 m)	